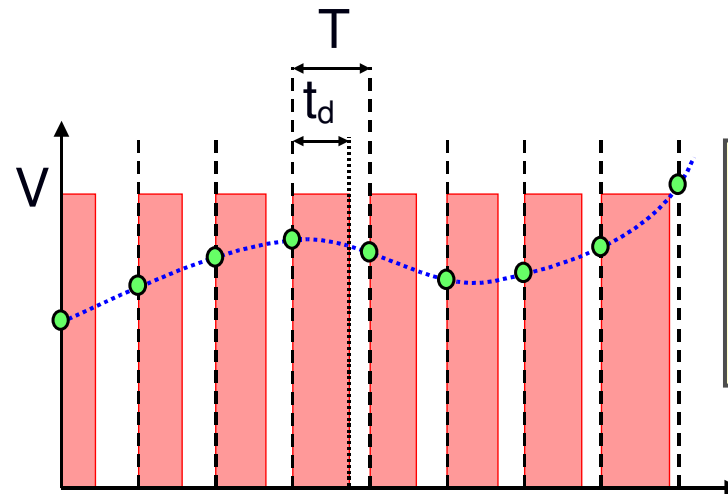
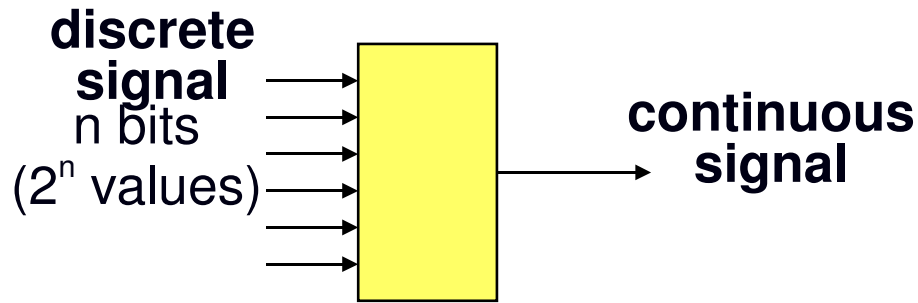


Pulse Width Modulation vs. Digital to Analog Conversion

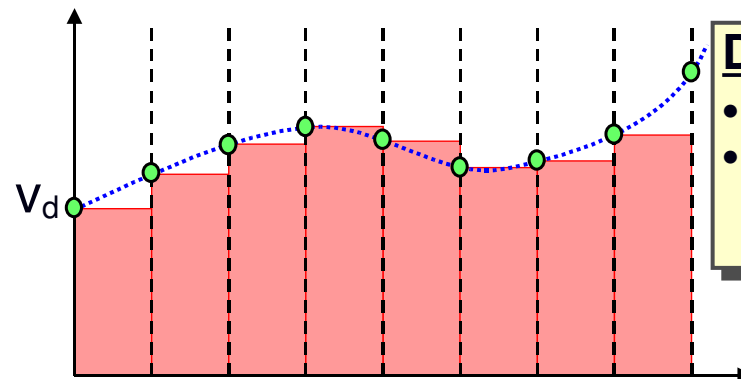


PWM

- Constant voltage
- Time modulation (2^n values)

Same volts per time

$$V \cdot t_d = v_d \cdot T$$

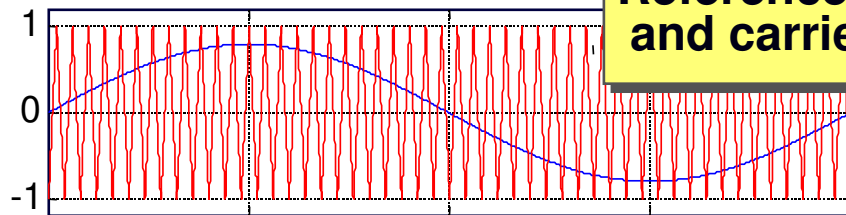


D/A converter

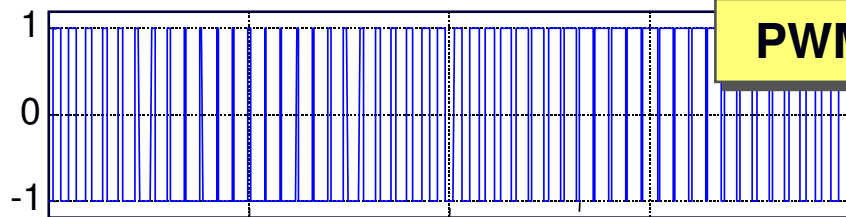
- Constant time
- Voltage modulation (2^n values)

Pulse Width Modulation vs. Digital to Analog Conversion

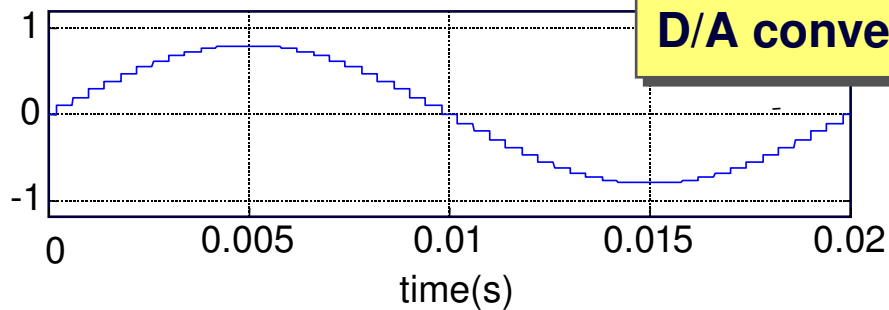
Reference voltage and carrier signal



PWM

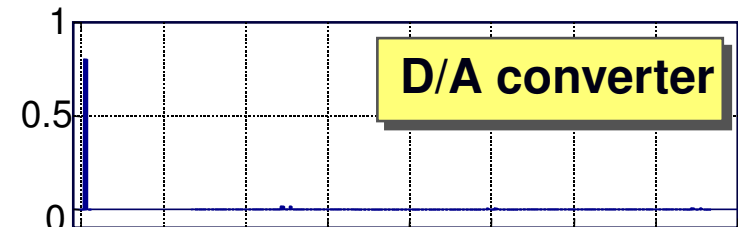


D/A converter

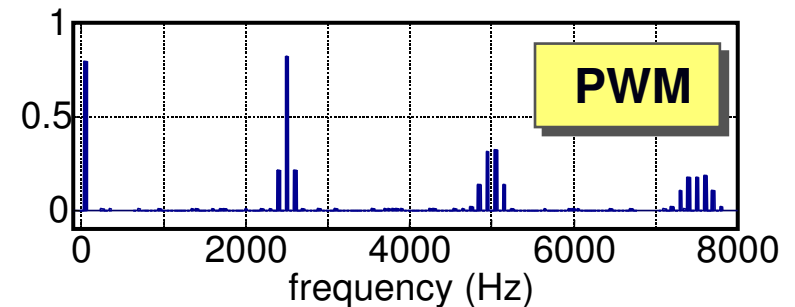


Frequency spectrum

D/A converter

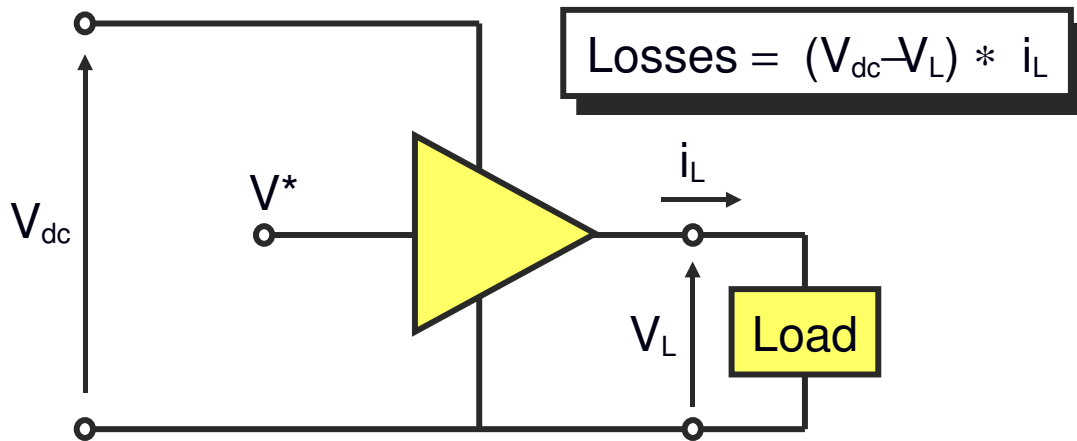


PWM

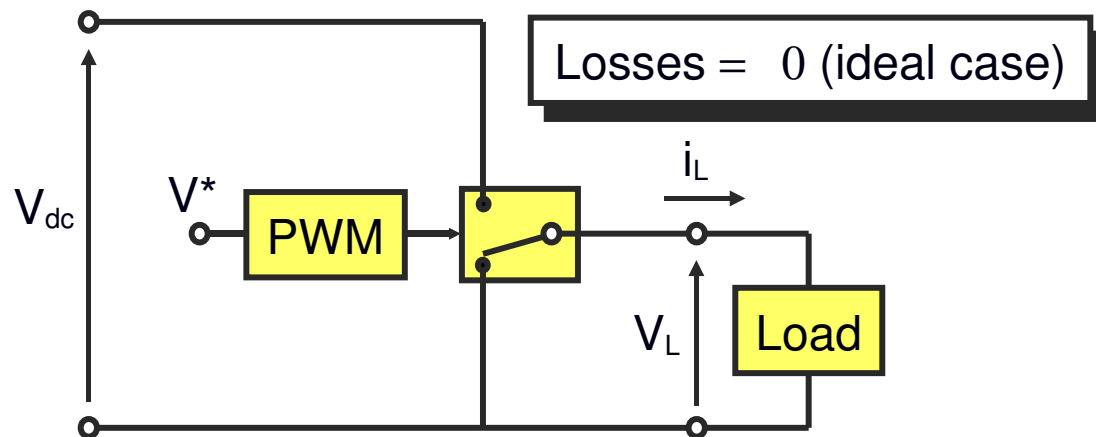


Linear vs. Switched Amplifiers

Linear amplifier



Switched amplifier



Pulse width modulation using a triangular carrier signal (half-bridge configuration)

